

Installing GFI EndPointSecurity

Introduction

This chapter provides you with the following information:

- The system requirements for installing GFI EndPointSecurity 4
- How to upgrade from GFI LANguard Portable Storage Control and GFI EndPointSecurity 3
- How to install GFI EndPointSecurity 4

System requirements

The following are the system requirements for GFI EndPointSecurity:

Hardware requirements

- Processor: 2GHz processor clock speed
- RAM: 512 MB (minimum); 1 GB (recommended)
- Hard Disk: 100 Mb of available space

Software requirements

- Operating system: Windows 2000 (SP4), XP, 2003, Vista and 2008 (x86 and x64 versions)
- Internet Explorer 5.5 or later
- .NET Framework version 2.0
- Database Backend: SQL Server 2000, 2005, 2008
- Port: TCP port 1116 (default)

NOTE 1: The firewall has to be configured to allow GFI EndPointSecurity to listen on the configured TCP port.

NOTE 2: GFI EndPointSecurity can only be installed and launched when using administrative privileges.

GFI EndPointSecurity agent – hardware requirements

- Processor: 1GHz processor clock speed
- RAM: 256 MB (minimum); 512 MB (recommended)
- Hard Disk: 50 Mb of available space

GFI EndPointSecurity agent – software requirements

- Operating system: Windows 2000 (SP4), XP, 2003, Vista and 2008 (x86 and x64 versions)

Installation procedure

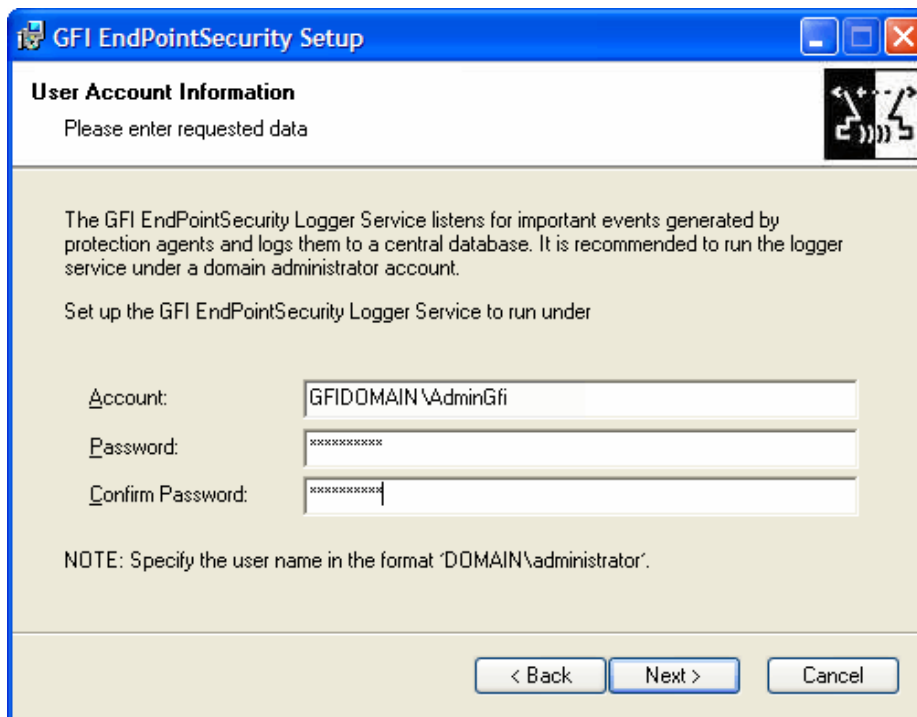
To install GFI EndPointSecurity 4:

1. Double-click on **endpointsecurity4.exe** and click **Next**.



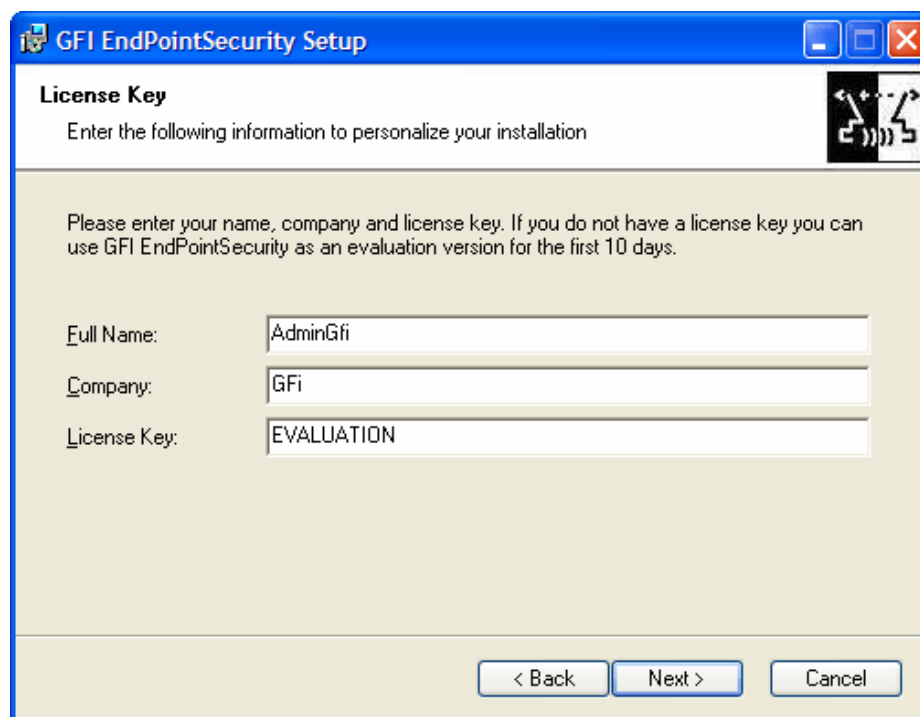
Screenshot 1 - GFI EndPointSecurity licensing agreement

2. Read the licensing agreement carefully. To proceed with the installation, select the 'I accept the terms in the license agreement' option and click **Next**.



Screenshot 2 - GFI EndPointSecurity domain administrator account setup

3. Specify the domain administrator account under which to run the GFI EndPointSecurity Logger service. Click **Next** to continue.



Screenshot 3 - GFI EndPointSecurity License key details

4. Specify the user name, organization and license key details. If you will be evaluating the product for 10 days, leave the default evaluation key as “Evaluation”. Click **Next** to continue.

5. Specify an alternative installation path or click **Next** to use the default path and proceed with the installation.

6. Click **Back** to re-enter installation information. Click **Next** to finalize the installation.

Upgrading from earlier versions

If you have GFI LANguard Portable Storage Control, or an earlier version GFI EndPointSecurity, it is possible to upgrade to GFI EndPointSecurity 4.

Upgrading from GFI EndPointSecurity 3

Upgrading from GFI EndPointSecurity 3 to GFI EndPointSecurity 4 is straightforward. The upgrade process is part of the GFI EndPointSecurity 4 installation process, and includes:

- Uninstalling GFI EndPointSecurity 3
- Importing GFI EndPointSecurity 3 configuration settings.

Importing GFI EndPointSecurity 3 configuration settings

When installing GFI EndPointSecurity 4, you are asked to confirm whether you want to import configurations from the previous version. Click **Yes** to import configurations. You are then prompted to specify which of the following configurations to import:

- Protection Policies:
 - Computer
 - Security settings
- Options:
 - Logging options
 - Database options

Upgrading from GFI LANguard Portable Storage Control

If the computer on which you are installing GFI EndPointSecurity 4 is protected by a GFI LANguard Portable Storage Control agent, you first need to uninstall that agent. To do this:

1. Open GFI LANguard Portable Storage Control configuration console.
2. Delete the agent from the computer where GFI EndPointSecurity will be installed.

NOTE: This process should be done only for the computer where GFI EndPointSecurity 4 will be installed.

3. Close the GFI LANguard Portable Storage Control configuration console application and proceed to installing GFI EndPointSecurity 4.
4. When installing GFI EndPointSecurity 4, you are asked to confirm whether you want to import configurations from the previous version. Click **Yes** to import configurations.

NOTE: The GFI LANguard Portable Storage Control agents that were protecting your computers will be automatically added to a protection policy called **LegacyAgents** in GFI EndPointSecurity 4.