

# 2. Installing GFI LANguard Network Security Scanner

---

## System requirements

Install GFI LANguard N.S.S on a computer that meets the following requirements:

- Windows 2000 (SP4), XP (SP2), 2003, 2008, VISTA (SP1), XP (SP3) operating system.
- Internet Explorer 5.1 or higher.
- Client for Microsoft Networks component - included by default in Windows 95 or higher.

**NOTE:** For more information on how to install the Client for Microsoft Networks component refer to the 'Installing the Client for Microsoft Networks component on Windows 2000 or higher' section in the 'Miscellaneous' chapter.

- Secure Shell (SSH) - included by default in every Linux OS distribution pack.

## Firewall considerations

Firewalls installed on either the host or target computer(s) will interfere with the operations of GFI LANguard N.S.S.

You must either:

- Disable the firewall software on the host/target computer(s)

Or

- Use the Windows Internet Connection Firewall domain policies to configure the necessary ports and services required by GFI LANguard N.S.S. to operate correctly. For more information on how to configure Active Directory policies to support scanning of/from computers running the Windows Internet Connection Firewall (XP SP2 or 2003 SP1) visit: <http://kbase.gfi.com/showarticle.asp?id=KBID002177>.

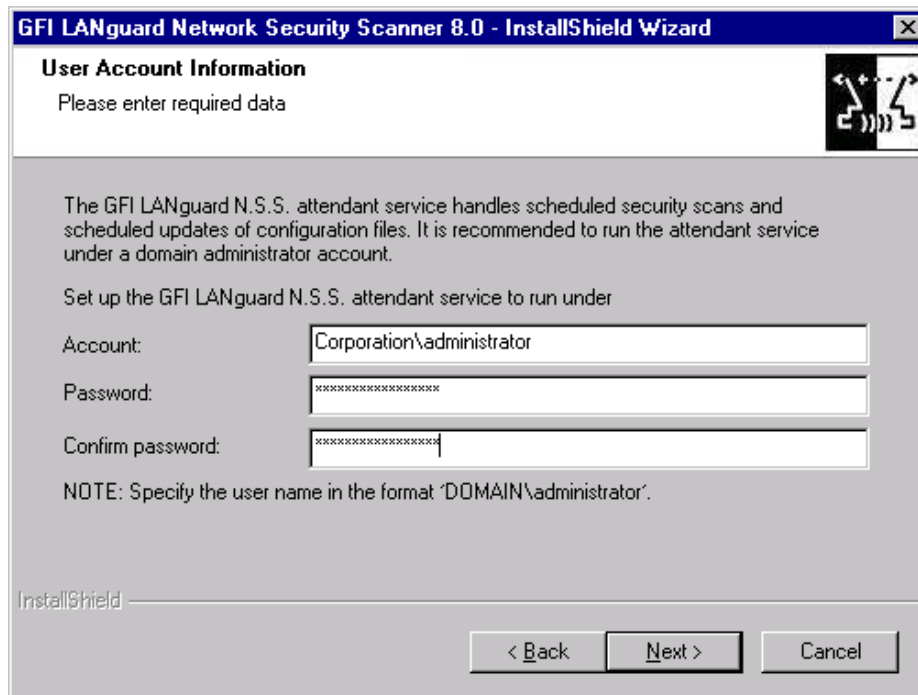
---

## Installation procedure

To install GFI LANguard N.S.S. 8:

1. Double-click on **languardnss8.exe** and click **Next**.
2. Read the licensing agreement carefully. To proceed with the installation, select the '*Accept the Licensing agreement*' option and click **Next**.
3. Specify licensing details and click **Next** to continue.

**NOTE:** Default key allows 10 days evaluation.



Screenshot 5 - Specify domain administrator credentials or use local system account

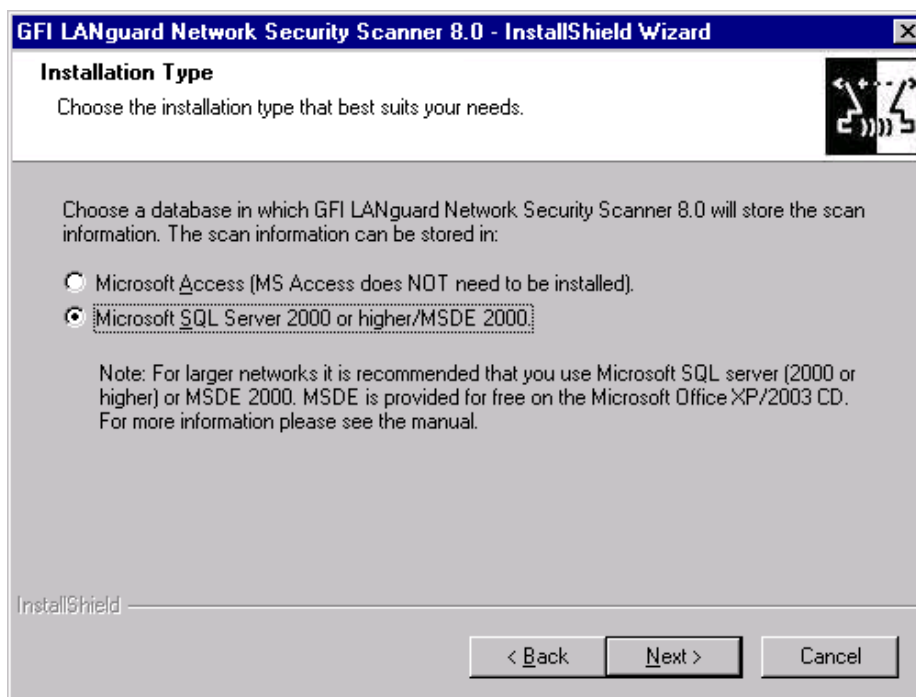
4. If GFI LANguard N.S.S. is already running on your system you will be asked to upgrade to a newer version or build.

**NOTE:** For more information refer to 'Upgrading earlier versions of GFI LANguard N.S.S.' section within this chapter.

5. Specify the service account under which GFI LANguard N.S.S. will be running and click **Next**.

**NOTE 1:** GFI LANguard N.S.S. requires administrative privileges to scan network computers.

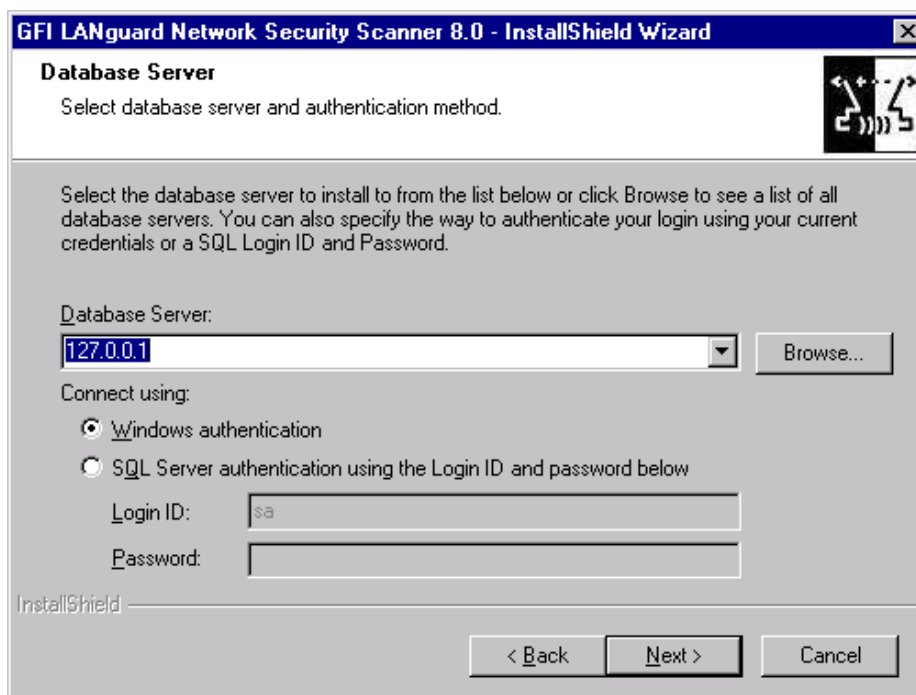
**NOTE 2:** For more information on how to specify different administrator credentials on a computer-by-computer basis refer to the 'Computer Profiles' section in this manual.



Screenshot 6 - Choose database backend

6. Select database backend to use when storing network audit results and click **Next**.

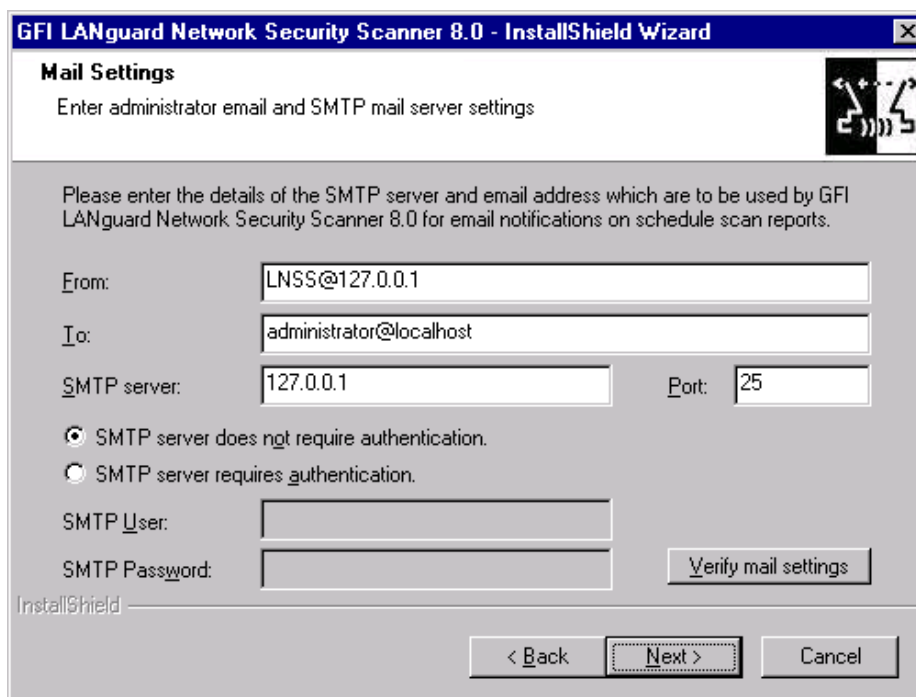
**NOTE:** We recommend the use of Microsoft SQL Server Express or higher.



Screenshot 7 - Specify SQL Server details

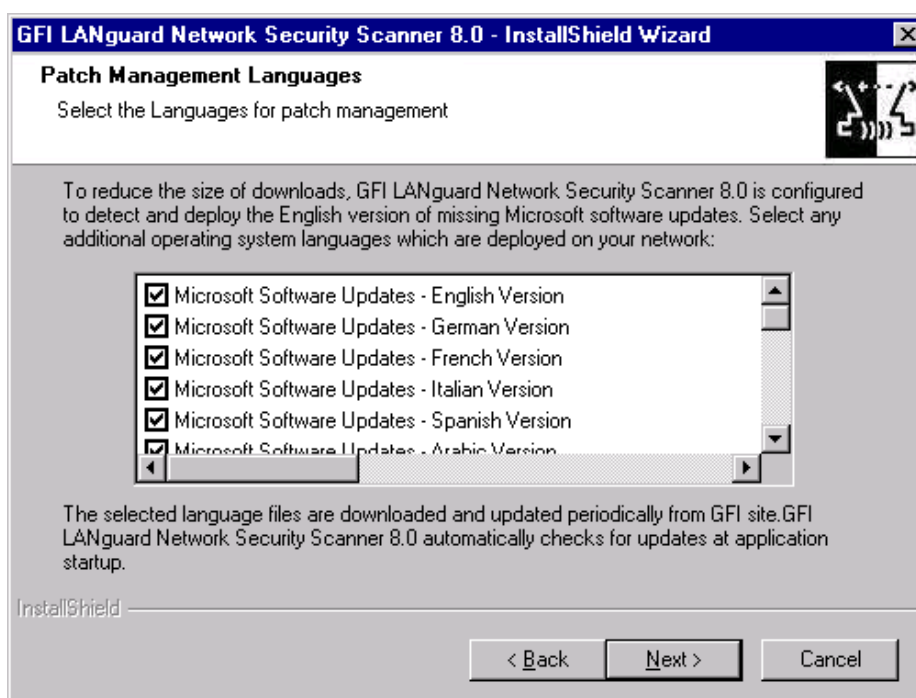
7. If Microsoft SQL Server is selected, specify SQL server details and authentication method. Click on **Next** to continue.

**NOTE:** GFI LANguard N.S.S. services require administrative privileges over the SQL Server database backend.



Screenshot 8 - Specify alerting email address and mail server details

8. Specify the SMTP mail server details and email address where administrator notifications will be sent. Click on **Next** to continue.



Screenshot 9 - Specify patch languages

9. Select the patch management languages that will be supported by GFI LANguard N.S.S. and click **Next**.

10. Specify the installation path for GFI LANguard N.S.S. and click **Next**.

11. Click **Finish** to finalize the installation.

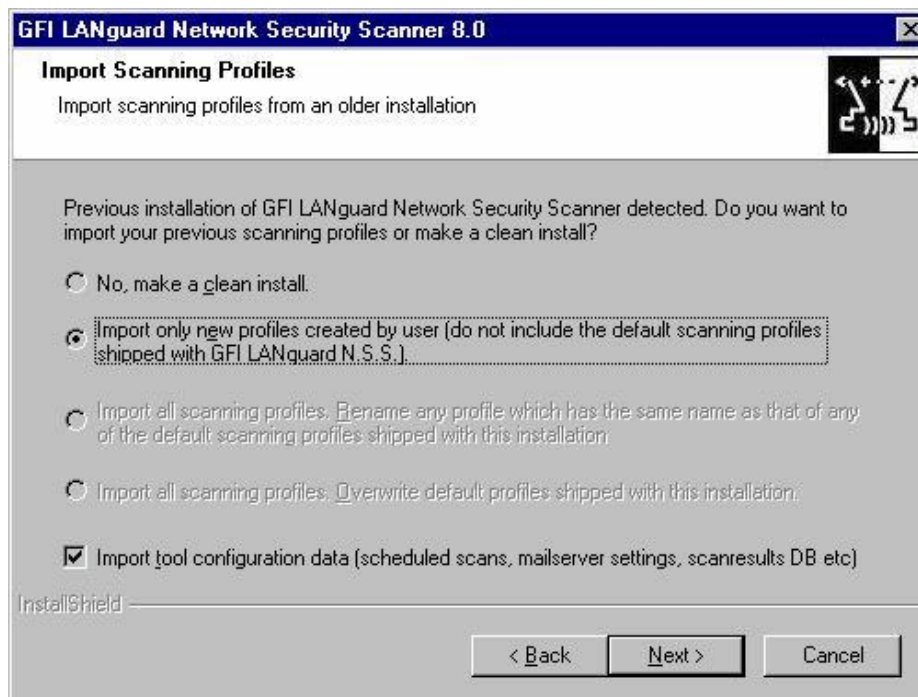
---

## Upgrading earlier versions of GFI LANguard N.S.S.

You can upgrade earlier versions (5, 6, and 7) of GFI LANguard N.S.S. and retain the current custom scan profiles, scheduled scan details, mailserver settings and the scan results database.

To achieve this:

1. Launch GFI LANguard N.S.S. installation.



Screenshot 10 - Choose import options

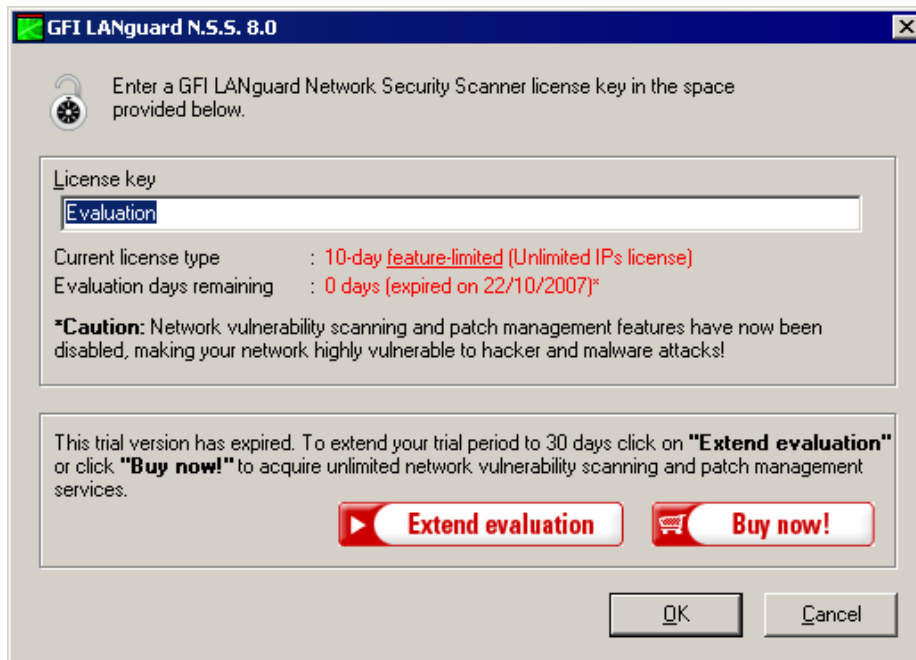
2. When prompted select the required import options.
3. Continue installation by following the instructions listed in the installation procedure section above.

**NOTE:** Evaluation versions and older builds of GFI LANguard N.S.S. 8 can be upgraded to the latest build using the same method.

---

## Entering your license key after installation

The unregistered, evaluation version of GFI LANguard N.S.S. expires after 10 days and is feature-limited. For a list of restrictions that apply to the feature-limited version of GFI LANguard N.S.S., please visit: <http://kbase.gfi.com/showarticle.asp?id=KBID003081>.



Screenshot 11 – General licensing node

When you obtain the 30-day evaluation key or the purchased licensed key, you can enter your license key without re-installing or re-configuring the product. To achieve this:

1. Launch GFI LANguard N.S.S. management console
2. Click on **Configuration** (upper-left of the management console)
3. Select **General ▶ Licensing**.